

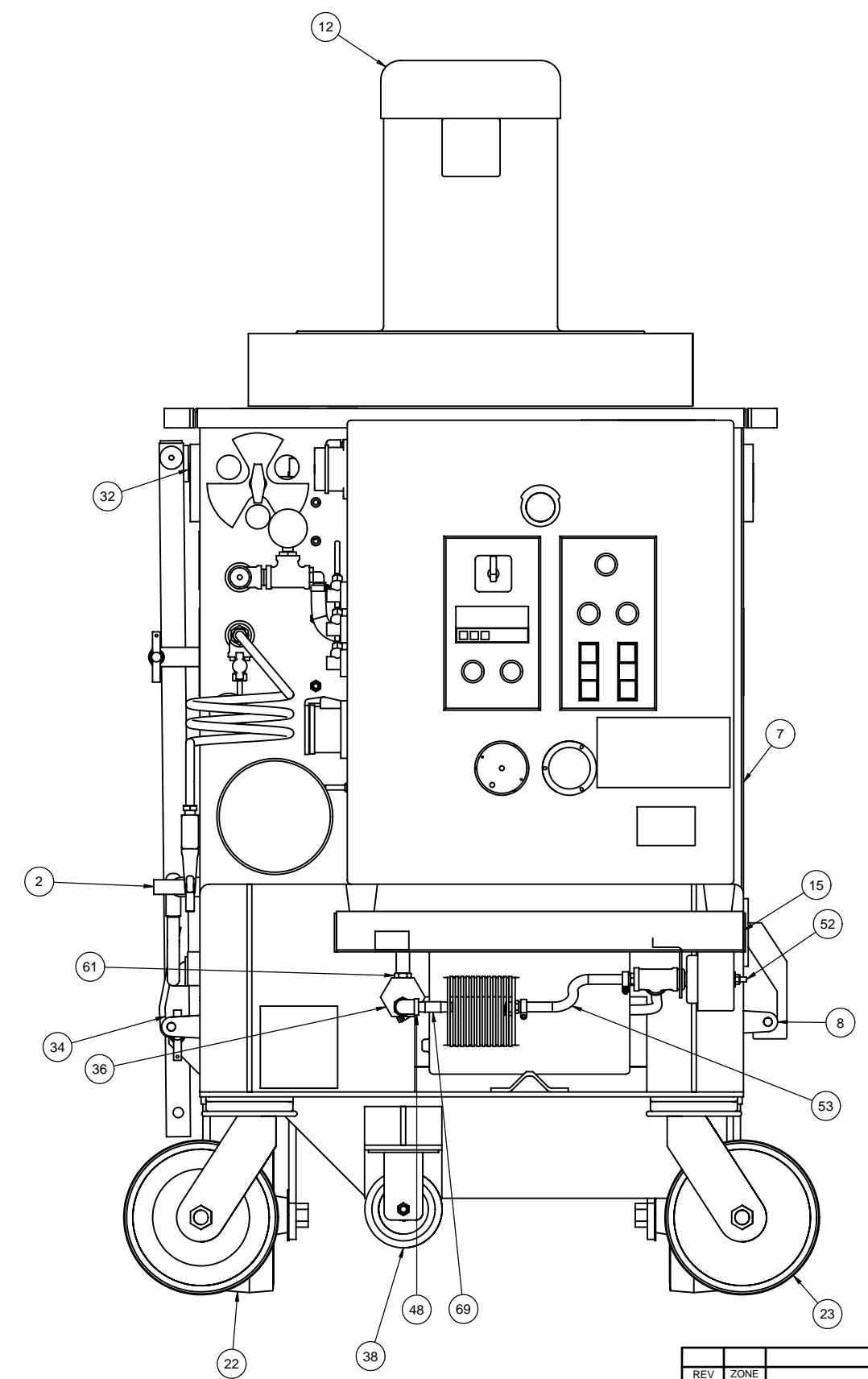
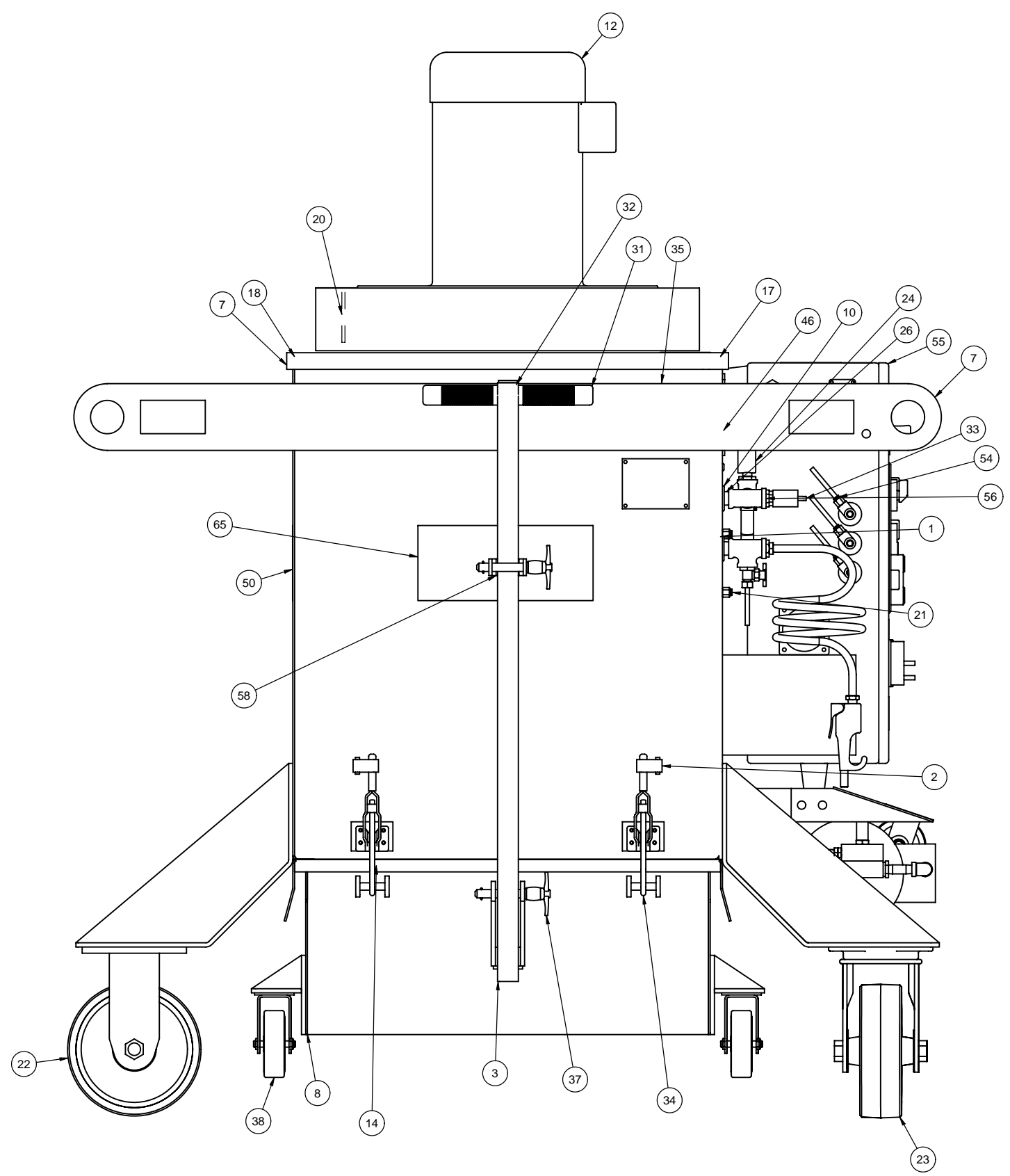
ITEM	QUANTITY	CATALOG NUMBER	DRAWING NUMBER	DESCRIPTION	CUT LENGTH	ITEM	QUANTITY	CATALOG NUMBER	DRAWING NUMBER	DESCRIPTION	CUT LENGTH
38	2	4906960		CASTER 4.00" DIA.		1	2	4413780	--	VENT/BREATHER 1/8"NPT X 7/16"HEX 40-MICRON	
42	1	5005370	--	BUSHING/REDUCING 1/2"NPT - TO 1/8"NPT		2	2	4645480	78A0284	LATCH/HANDLE - 6-54DC	
44	1	6749060	--	VALVE/NEEDLE SHUT-OFF 1/8"NPT X 1/4" TUBE		3	1	4900970	82B0898	HANDLE/DUST HOPPER	
45	1	6761180	--	BLOWGUN/RECOILING HOSE		4	6	4932060		ELEMENT/FILTER - 54 SQ. FT.	
46	3	6765510	--	GROMMET/RUBBER 1/4"ID		5	6	4984990	--	HANGER/ROD TORIT #6MM 1884600	
47	1	6765540	--	COMPRESSOR / AIR - 3/4 HP 208/230 V 3-P		7	1	6760660	90D0187	BAGHOUSE/WELDMENT	
48	1	5005510	--	ELBOW/PIPE 1/4"NPT X 90DEG.		8	1	6760680	88C0164	HOPPER/DUST	
49	2	6782140	--	SEAL/RUBBER 1" ABRAS. RESIS. DURO 15-20		9	1	6765500	88C0230	TANK/AIR	
50	3	P000027		DECAL / 6-54 DC US FILTER / BLASTRAC		10	2	6765520	--	GROMMET/RUBBER 3/4"ID	
52	1	6823550	--	FILTER / SOLBFRG		11	3	6765530	--	VALVE/ DIAPHRAGM	
53	1	6921470	--	HOSE / AIR .375" 300 P.SI.	3.00 FT	12	1	6765550	--	BLOWER/CINCNATI 18 1/2" DIA. CCW ROT	
54	4	6861660	--	TUBING/POLYURETHANE BLU.25" OD X .17" ID	12.00 FT	13	3	6765580	88C0236	HEADER/BLOW DOWN	
55	1	P000185	505-0004	PANEL/ELEC. CONTROL		14	6	6770020	--	CAPLUG/PROTECTIVE CLOSURE 1/4" ID X 1 3/4"	
56	3	5005170	--	TEE/PIPE 1/2"NPT		15	1	6775970	89D0219	SHIELD/COMPRESSOR	
58	1	X000236	--	RUBBER/SPONGE .25" X 1.00" DURO 15-20	5.00"	16	1	6777360	--	ELBOW / 1/2"HOSE BARB X 3/8"NPT X 90 DEG.	
60	2	6959590	--	GROMMET/RUBBER 1/2" ID X 1-1/16" OD		17	2	6782140	--	SEAL/RUBBER	
61	1	2558610	--	MUFFLER/EXHAUST 3/8"NPT		18	2	6782150	--	SEAL/RUBBER	
65	1	P000572	505-0011	NAMEPLATE ARRANGEMENT / 6-54 DC US FILTER / BLASTRAC		20	1	6831040	--	KEY/PARALLEL	
66	2	6782150		SEAL/RUBBER 1" ABRAS. RESIS. DURO 15-20		21	2	6991940	--	FITTING/PRESTOLOK MALE 1/4" TUBE X 1/8" NPT	
67	4	5005380	--	BUSHING/REDUCING 1/2"NPT - TO 1/4"NPT		22	2	6765570		CASTER/RIGID 8.00" DIA X 2.50" W	
68	4	6830450	--	INSERT/HOSE 3/8" NPT - 3/8" MALE BARBED		23	2	4906970		CASTER/SWIVEL 8.00" DIA X 2.50" W	
69	2	5003400	--	NIPPLE/PIPE 1/4"NPT X 2.00"		24	1	1268140	--	GAUGE/AIR PRESSURE 2" X 1/4"NPT 0-160PSI	
71	1	6778490	89B0202	ADAMANT-PLATE		25	1	1462800	--	INSERT/HOSE 1/2" NPT MALE BARBED	
72	1	5001030	--	WASHER, FLAT 5/16" DIA.		26	2	5003520	--	NIPPLE/PIPE 1/2"NPT X 4.50"	
73	1	6780180	--	BAR-KNOB/UTILITY		27	1	6921470		HOSE / AIR 3/8" 3 00 P.S.I.	1.50 FT
74	6	6749040	--	VENTURI TUBE		28	5	2051120	--	CLAMP/HOSE ADJ - 9/16" - 1- 1/16" SS	
75	12	6749080	--	RIVET/ALUMINUM		29	1	2554770		HOSE RH27 0.50" ID X 0.75" OD	2.33 FT
76	1	5003540	--	NIPPLE/PIPE 1/2"NPT X 1.00"		30	1	5005160	--	TEE/PIPE 3/8"NPT	
77	1	500539	--	BUSHING/REDUCING 1/2"NPT - TO 3/8"NPT		31	2	4532900	--	GRIP/HANDLE 1.00" I.D. RUBBER	
						32	1	X000236	--	RUBBER/SPONGE .25" X 1.00" DURO 15-20	1.88"
						33	1	4834680	--	VALVE/SAFETY - AIR	
						34	2	4835510	--	CLAMP/DE-STA-CO #351	
						35	3	4838640	--	ELBOW / 90 DEG. 1/8" MNPT	
						36	1	4906910	--	UNLOADER/AIR ADJUSTABLE 40-120PSI	
						37	2	4906940	--	T-HANDLE PIN / BALL LOCK 1/2" X 2 - 1/2"	

B	BOM	REMOVED ITEM #39 (5003500), #43 (5005520), #70 (5025550); ADDED ITEMS #76 AND #77; QUANTITY OF ITEM #56 WAS 1	2/2/12	KMK
A	BOM	REMOVED ITEM #6 & #19; ADDED ITEMS #71, #72, #73, #74, #75 QSCO 0807-004	7/3/08	KMK
REV	ZONE	DESCRIPTION	DATE	BY

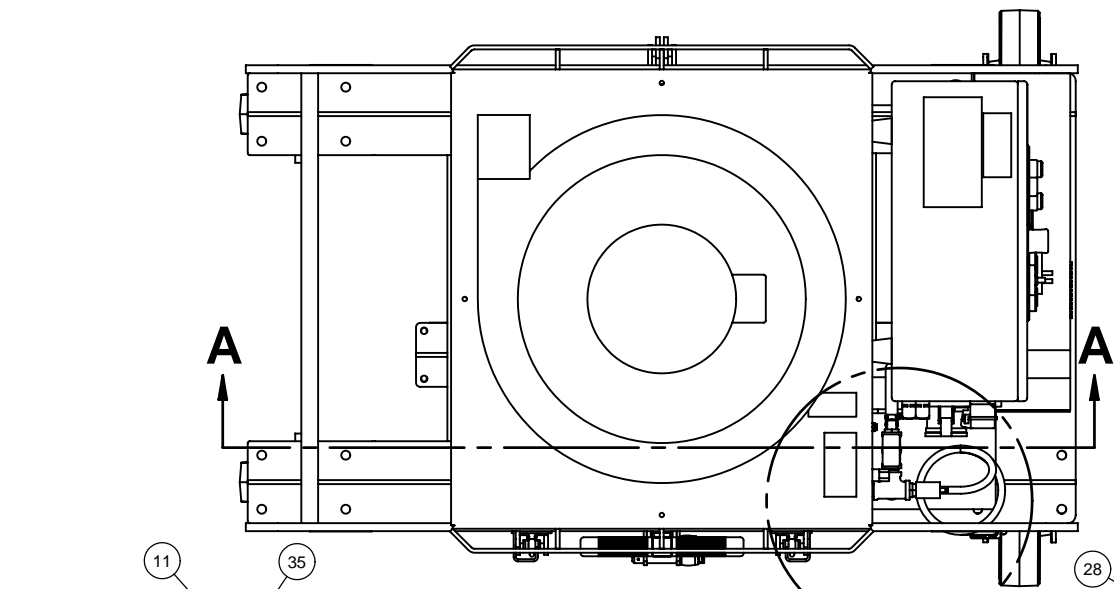
REVISION

THIS DRAWING AND THE DESIGN SHOWN THEREIN IS THE PROPERTY OF U.S. FILTER WHEELABRATOR AND USE OR COPIES THEREOF CANNOT BE MADE WITHOUT WRITTEN CONSENT.

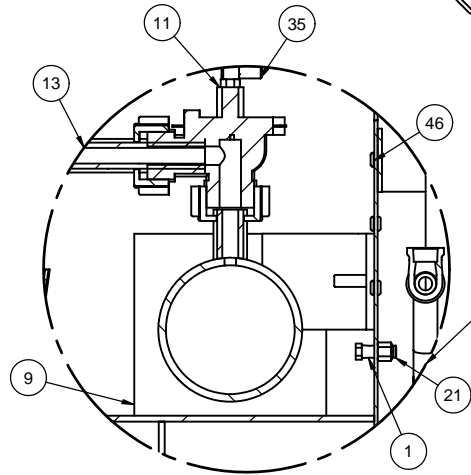
NEXT ASSY	--	REF DWG	--	PART NO	6-54DC99
TOLERANCE UNLESS SPECIFIED ANGLES ± .500° 1 PL DEC ± .060 2 PL DEC ± .010 3 PL DEC ± .005		U.S. FILTER BLASTRAC		6215 ALUMA VALLEY DRIVE OKLAHOMA CITY, OK 73121 U.S.A.	
MACHINE ASSEMBLY					
6-54 DUST COLLECTOR					
SCALE	1:4	DRWN	SCS	DATE	5/14/01
SHT 1 OF 4				REV	B



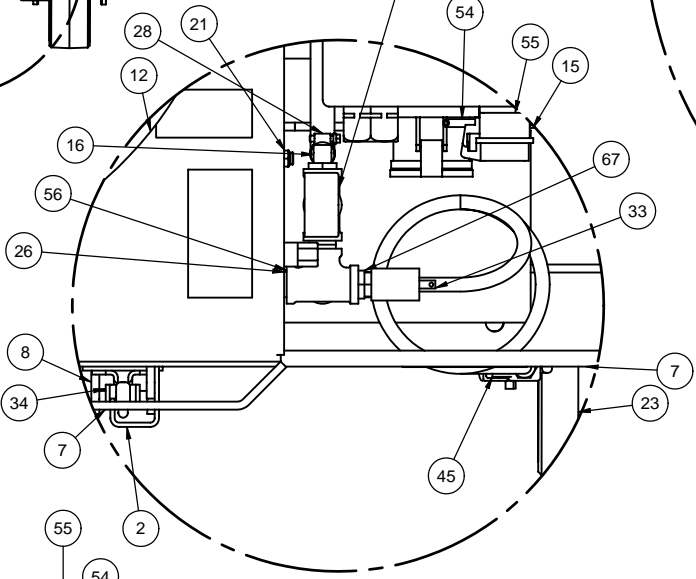
REV	ZONE	DESCRIPTION	DATE	BY
REVISION				
<small>THIS DRAWING AND THE DESIGN SHOWN THEREIN IS THE PROPERTY OF U.S. FILTER WHEELABRATOR AND USE OR COPIES THEREOF CANNOT BE MADE WITHOUT WRITTEN CONSENT.</small>				
NEXT ASSY	--	REF. DWG	--	PART NO. 6-54DC99
TOLERANCE UNLESS SPECIFIED		U.S. FILTER		
ANGLES ± .500°		6215 ALUMA VALLEY DRIVE		
1 PL DEC ± .060		OKLAHOMA CITY, OK 73121		
2 PL DEC ± .010		U.S.A.		
3 PL DEC ± .005		BLASTRAC		
SCALE 1:4		MACHINE ASSEMBLY		
DATE 5/14/01		6-54 DUST COLLECTOR		
SHT 2 OF 4		DRWN SCS		REV B
		505-0012		



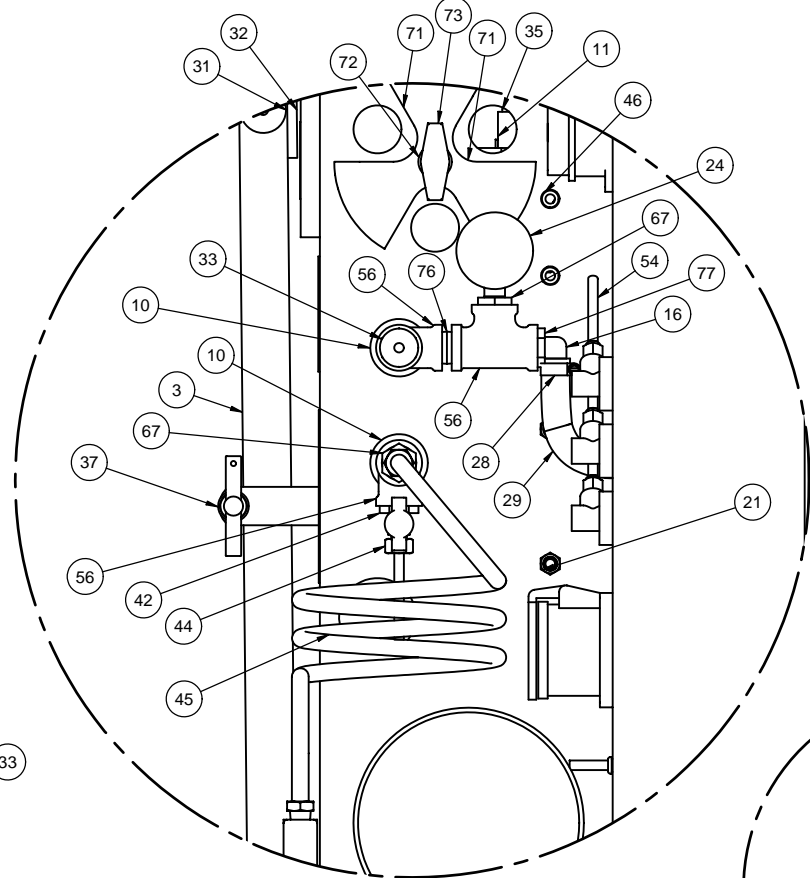
1:6



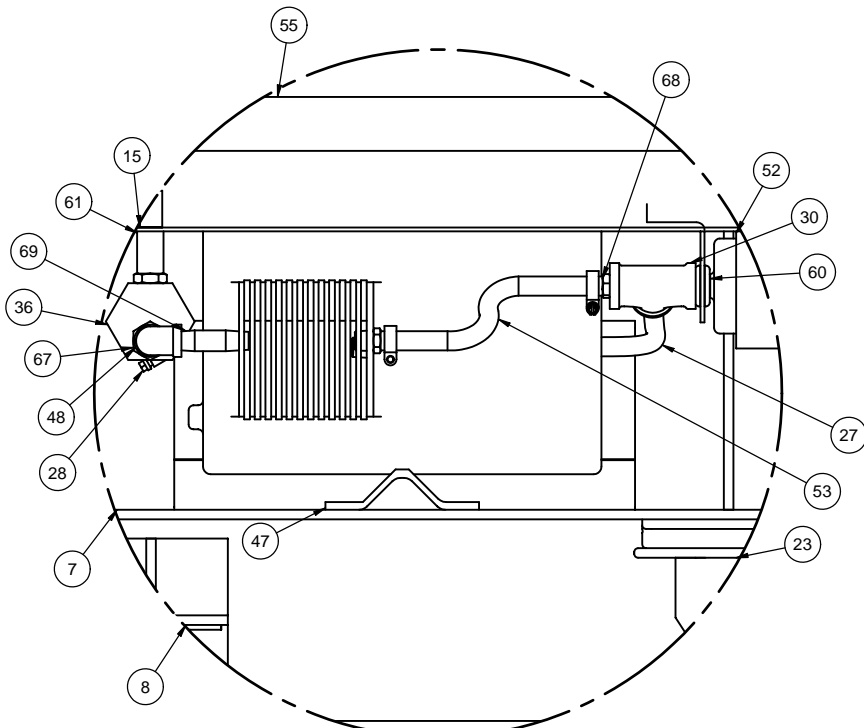
**DETAIL B
1:3**



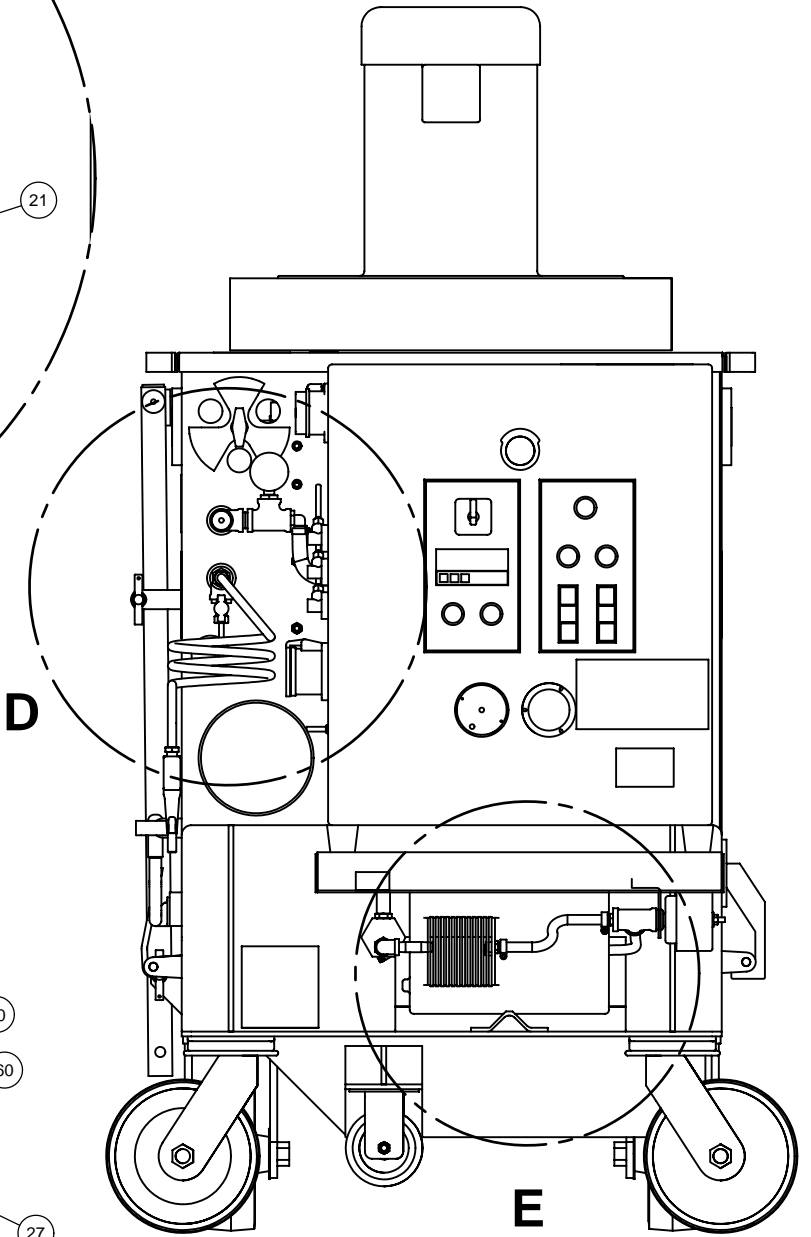
**DETAIL C
1:3**



**DETAIL D
1:2.5**

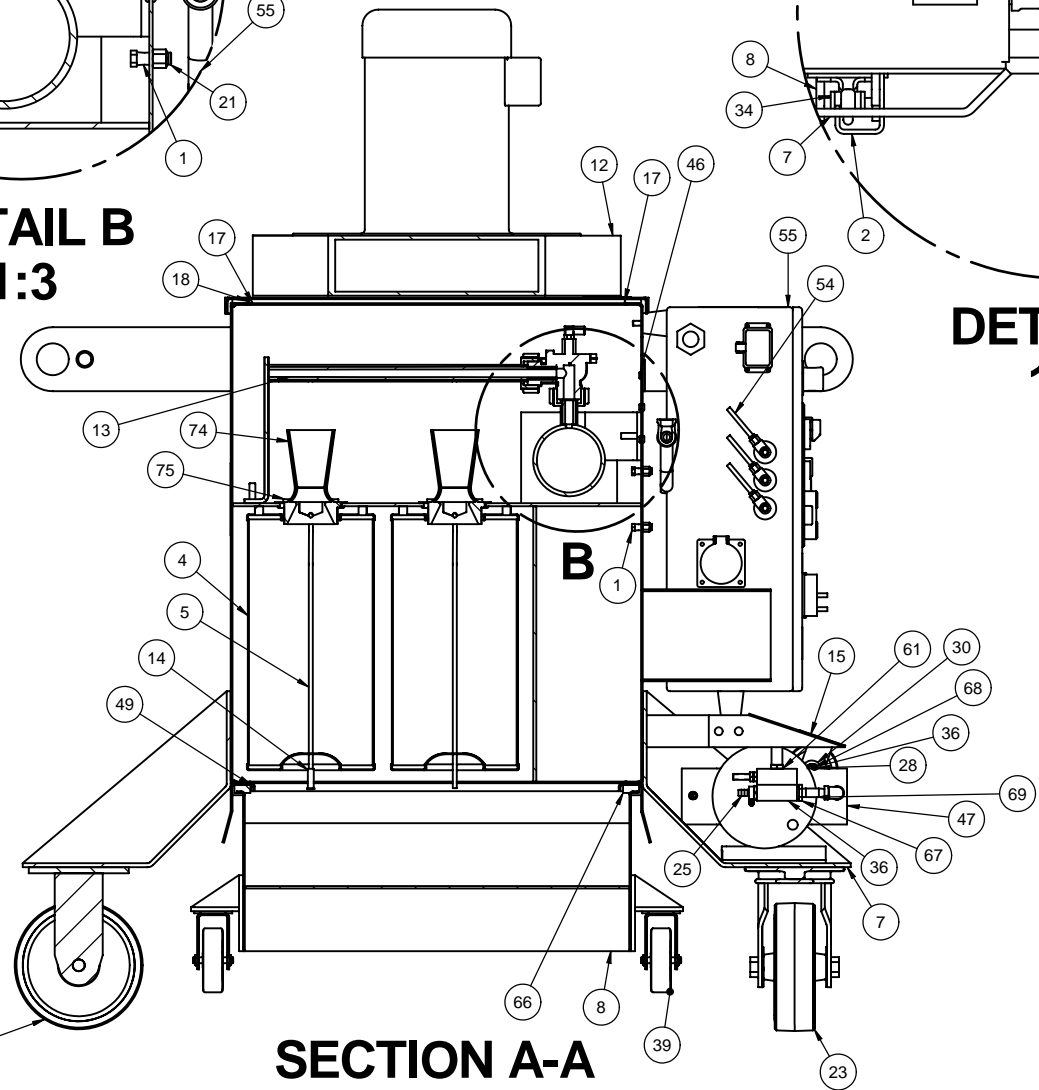


**DETAIL E
1:2.5**



1:5

E

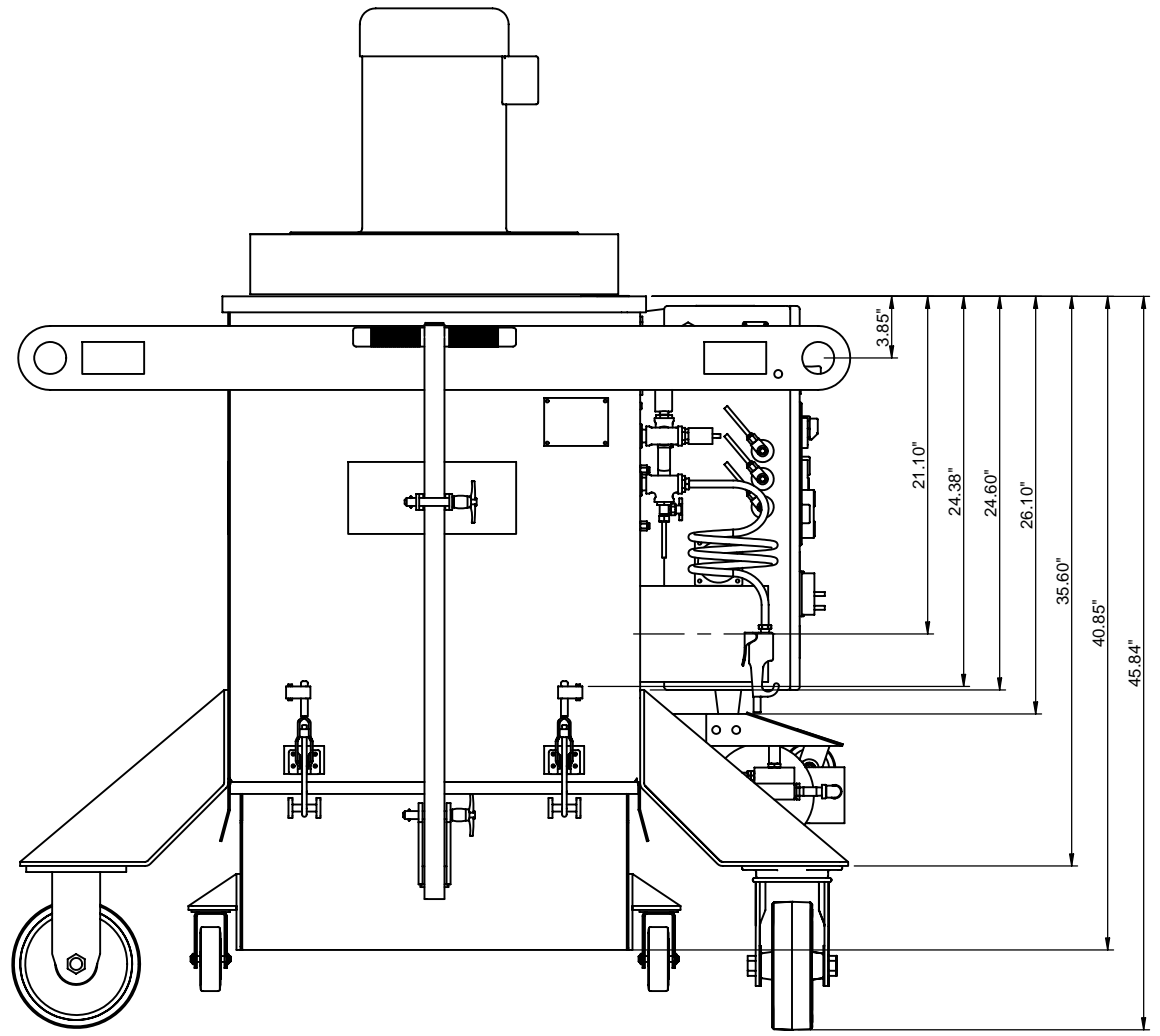
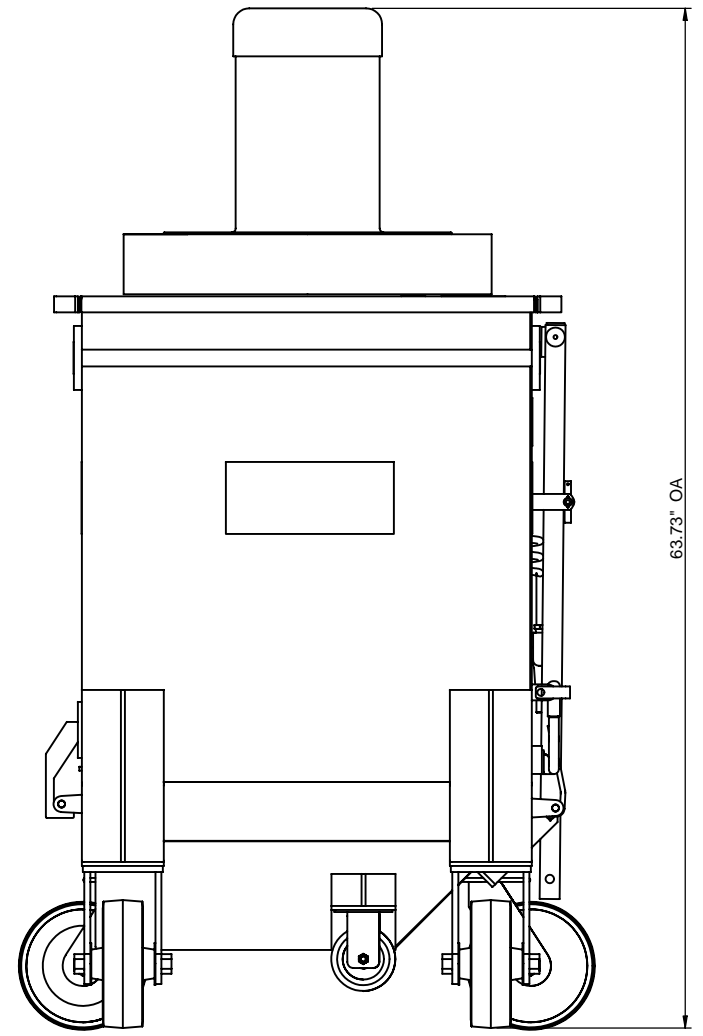
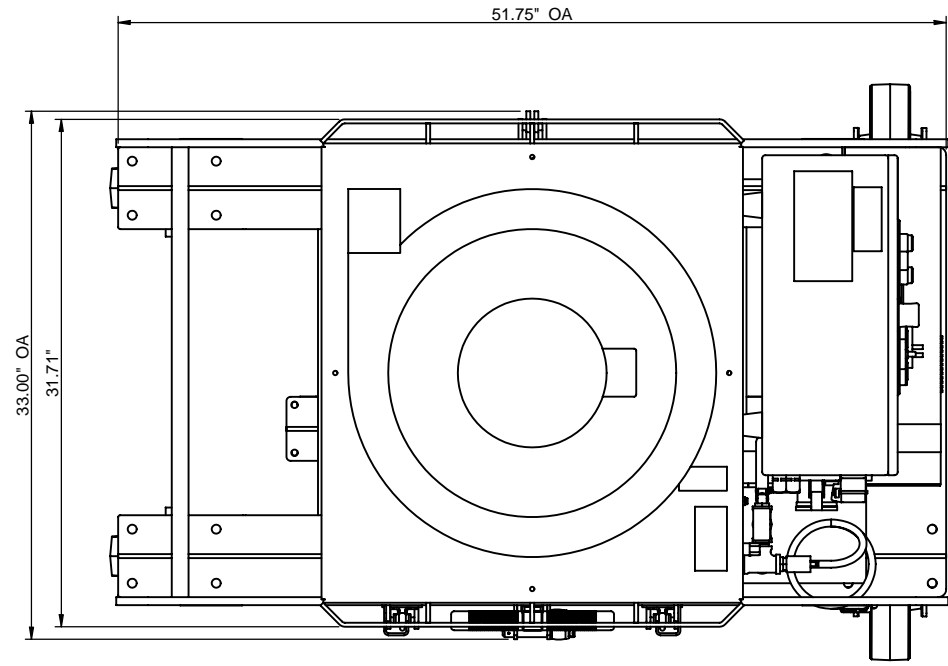


**SECTION A-A
1:6**

REV	ZONE	DESCRIPTION	DATE	BY
REVISION				
THIS DRAWING AND THE DESIGN SHOWN THEREIN IS THE PROPERTY OF U.S. FILTER WHEELABRATOR AND USE OR COPIES THEREOF CANNOT BE MADE WITHOUT WRITTEN CONSENT.				
NEXT ASSY	---	REF. DWG.	---	PART NO. 6-54DC99
TOLERANCE UNLESS SPECIFIED		U.S. FILTER BLASTRAC		
ANGLES ± .500°	6215 ALUMA VALLEY DRIVE OKLAHOMA CITY, OK 73121 U.S.A.			
1 PL DEC ± .060	MACHINE ASSEMBLY			
2 PL DEC ± .010	6-54 DUST COLLECTOR			
3 PL DEC ± .005	SCALE 1:4	DRWN SCS	DATE 5/14/01	REV B
	SHT 3 OF 4		GEN	505-0012

A B C D E F G H J K L

1
2
3
4
5
6
7
8



1:6

REV	ZONE	DESCRIPTION	DATE	BY
REVISION				
<small>THIS DRAWING AND THE DESIGN SHOWN THEREIN IS THE PROPERTY OF U.S. FILTER WHEELABRATOR AND USE OR COPIES THEREOF CANNOT BE MADE WITHOUT WRITTEN CONSENT.</small>				
NEXT ASSY	--	REF DWG	--	PART NO. 6-54DC99
TOLERANCE UNLESS SPECIFIED		BLASTRAC		
ANGLES ± .500°		6215 ALUMA VALLEY DRIVE OKLAHOMA CITY, OK 73121 U.S.A.		
1 PL DEC ± .060		MACHINE ASSEMBLY		
2 PL DEC ± .010		6-54 DUST COLLECTOR		
3 PL DEC ± .005		SCALE 1:4	DRWN SCS	REV B
DATE 5/14/01		SHT 4 OF 4	505-0012	

A B C D E F G H J K L